

BANDA MUNICIPAL

- DE -

MADRID

*Clarinet Solista*

d. 470

*El Príncipe Igor**Danzas**A. Borodine*

No. 8.

Presto. *(as)* *mf* *brillante* *Solo*

mf *brillante*

mf *brillante*

(a.) a 2.

mf *Solo*

mf *Solo*

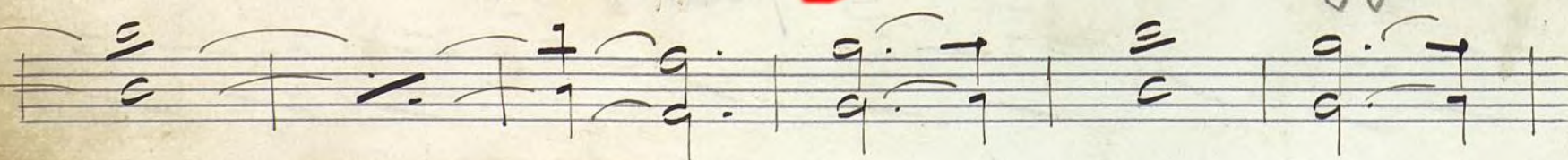
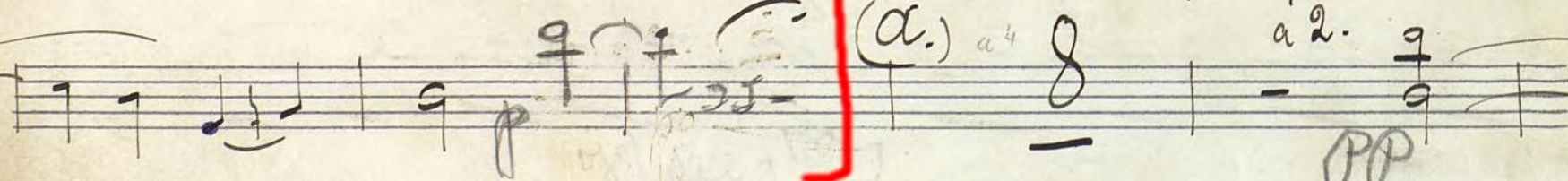
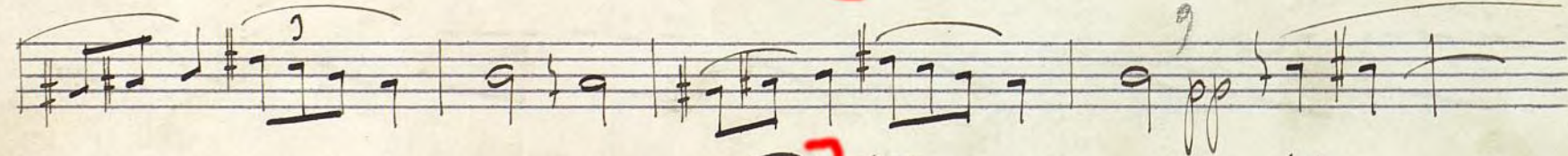
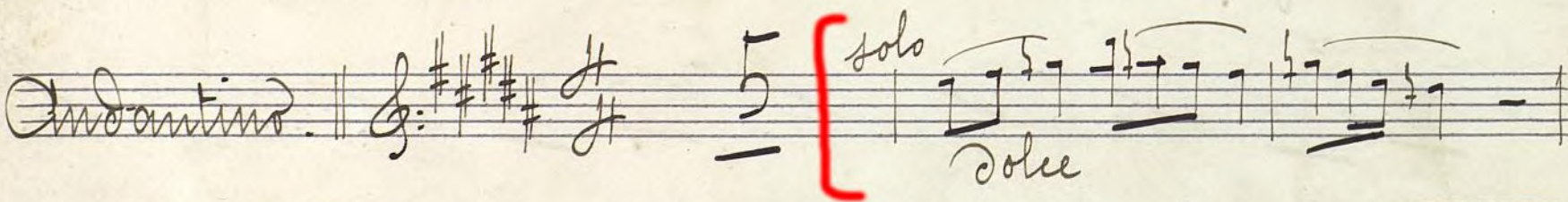
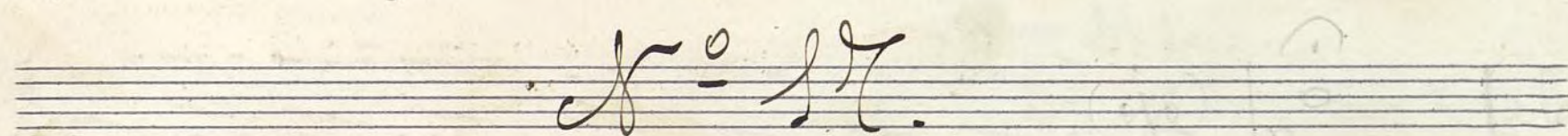
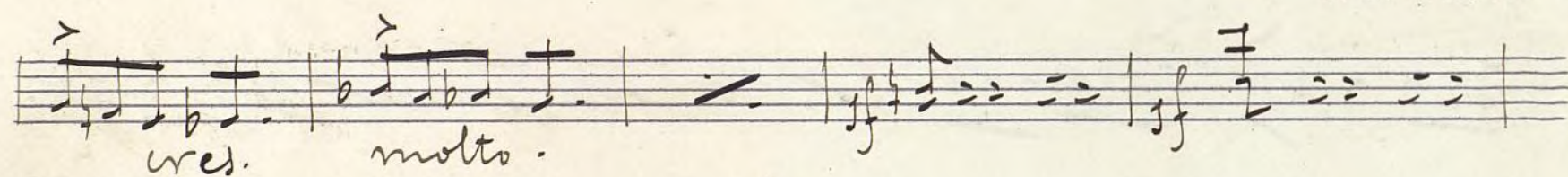
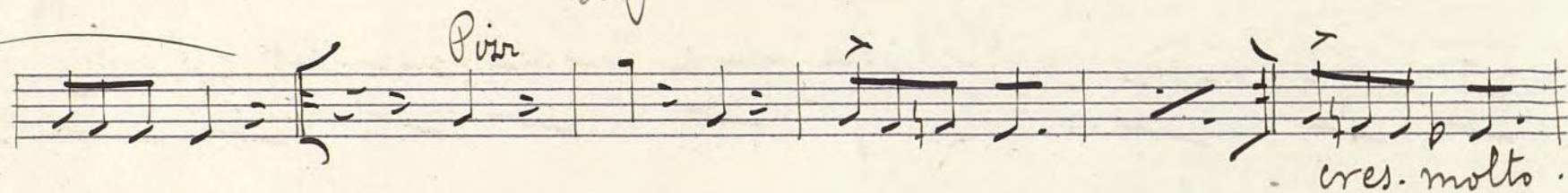
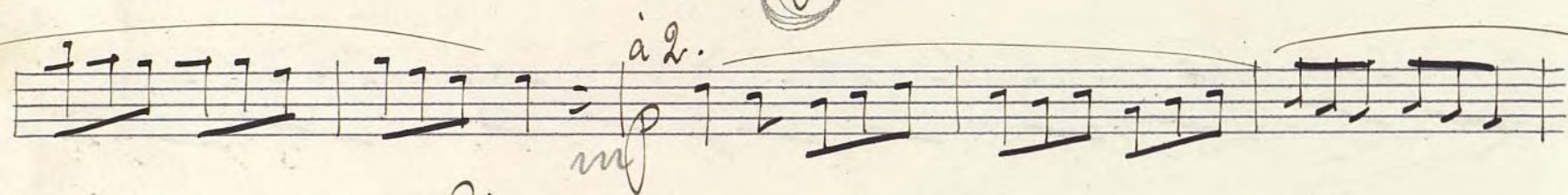
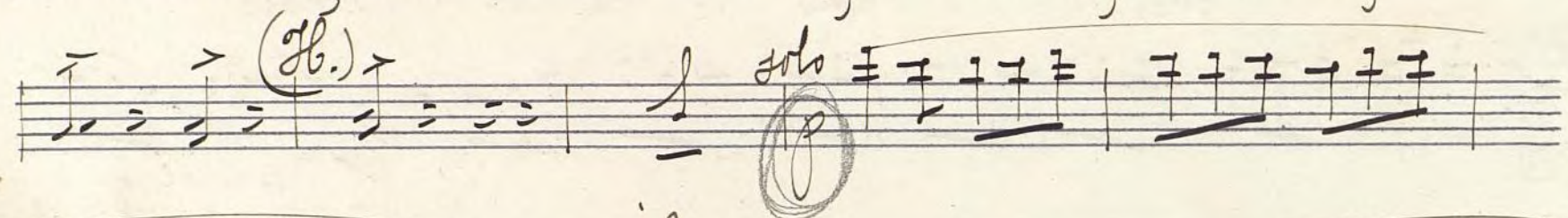
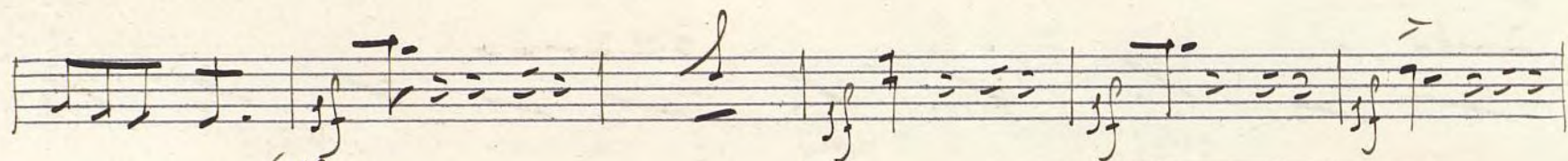
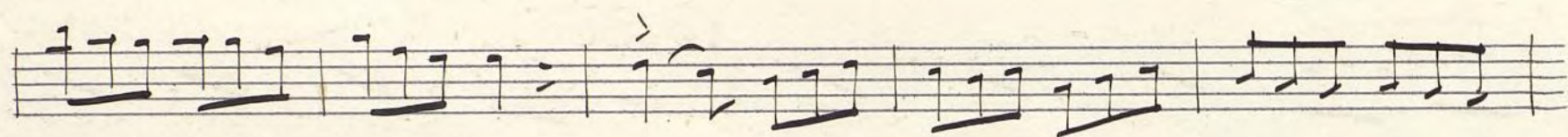
cres.

(B.)

a 2.

(C.)

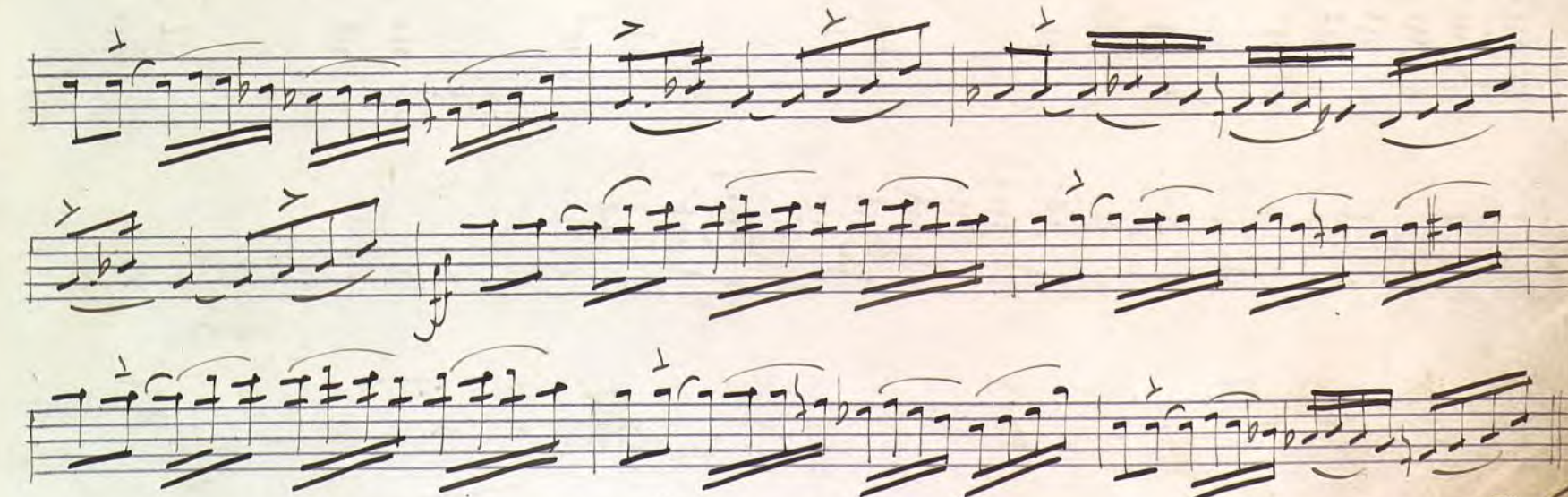
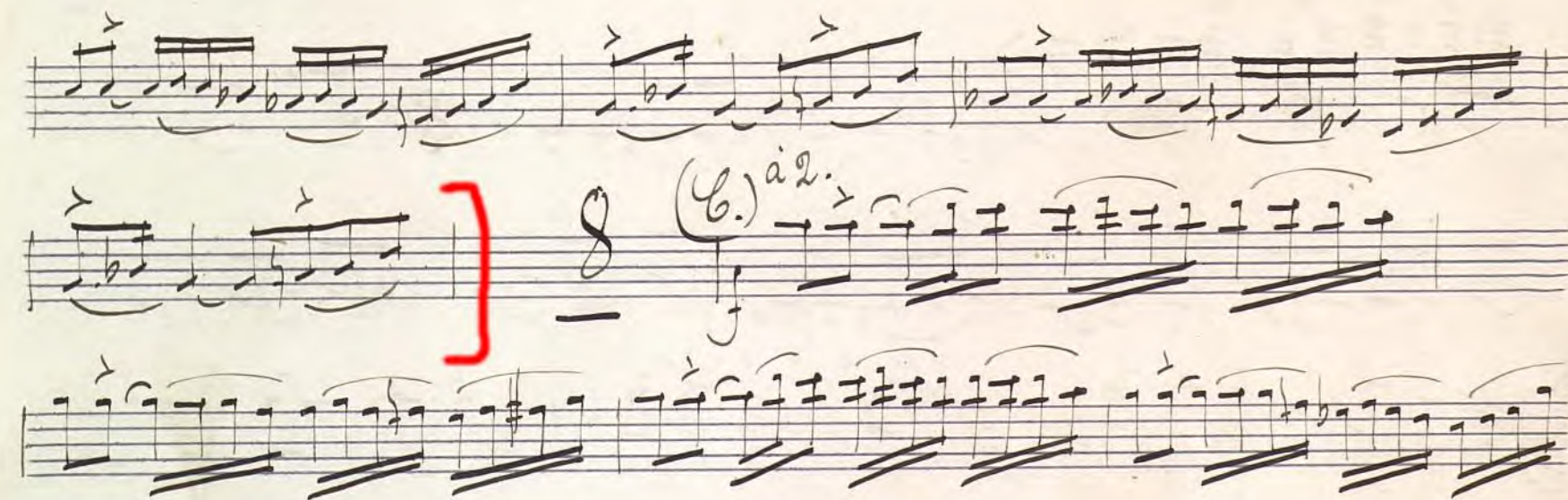
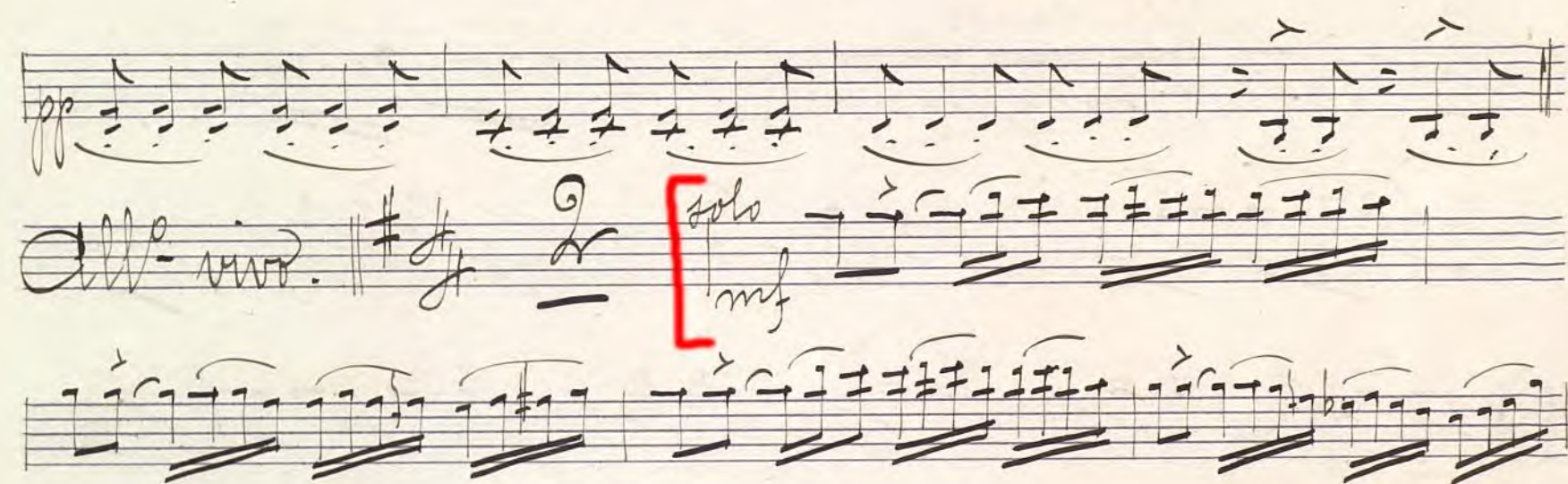
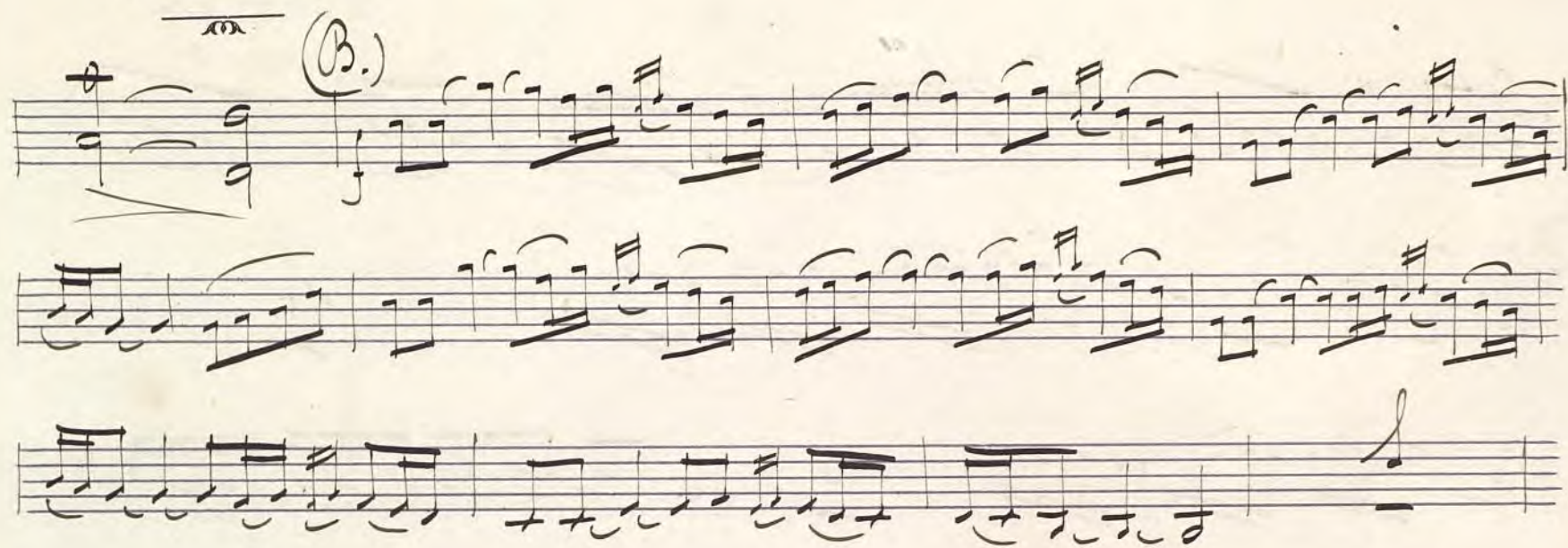
(C.)



BANDA MUNICIPAL

- DE -

MADRID



V. Pini